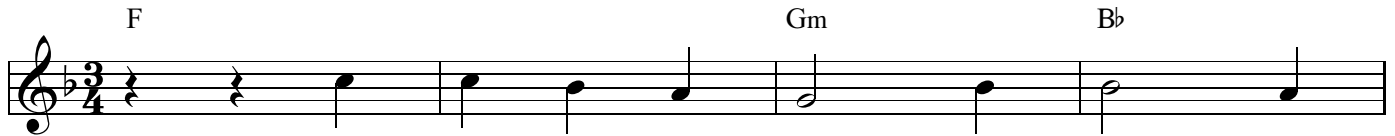


# Jesus, What a Friend for Sinners

Words by  
J. Wilbur Chapman, 1910

Music by  
Rowland Hugh Pritchard, 1855

## INTRO



## VERSE



Je - sus! what a Friend for sin - ners!  
 Je - sus! what a strength in weak - ness!  
 Je - sus! what a help in sor - row!  
 Jes - sus! what a guide and keep - er!  
 Je - sus! I do now re - ceive him,



Je - sus! lov - er of my soul;  
 Let me hide my - self in him;  
 While the bil - lows o'er me roll,  
 While the tem - pest still is high,  
 more than all in him I find;



friends may fail me, foes as - sail me,  
 tempt - ed, tried, and some - times fail - ing,  
 e - ven when my heart is break - ing,  
 storms a - bout me, night o'er - takes me,  
 he hath grant - ed me for - give - ness,



he, my Sav - ior, makes me whole.  
 he, my strength, my vic - t'ry wins.  
 he, my com - fort, helps my soul.  
 he, my pi - lot, hears my cry.  
 I am his, and he is mine.

## REFRAIN

21 Am Dm Gm<sup>7</sup> C<sup>7</sup>

Hal - le - lu - jah! what a Sav - ior!

25 F Dm<sup>7</sup> Gm<sup>7</sup> C<sup>sus</sup> C

Hal - le - lu - jah! what a Friend!

29 F/A Gm F C

Sav - ing, help - ing, keep - ing, lov - ing,

33 F Gm<sup>7</sup> F C<sup>7</sup>

he is with me to the

*Back to Verse (Bar 5)* Last Time

36 F Gm Bb F

end.