

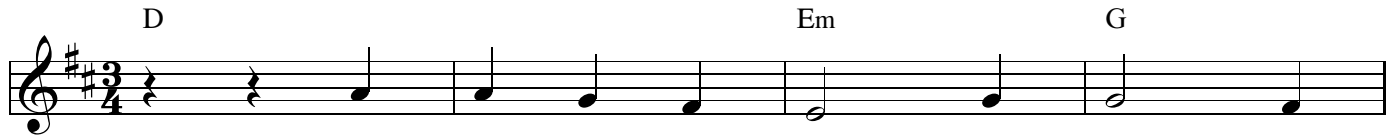
Jesus, What a Friend for Sinners

Words by
J. Wilbur Chapman, 1910

CAPO 3

Music by
Rowland Hugh Pritchard, 1855

INTRO



VERSE

5 D Em⁷ A

Musical notation for the Verse section, measures 5-8. The melody consists of quarter notes: D4, E4, F#4, G4, A4, B4, C5, B4, A4, G4, F#4, E4, D4. Chords indicated above the staff are D (measures 5-6), Em⁷ (measure 7), and A (measure 8).

Je - sus! what a Friend for sin - ners!
Je - sus! what a strength in weak - ness!
Je - sus! what a help in sor - row!
Jes - sus! what a guide and keep - er!
Je - sus! I do now re - ceive him,

9 D Em A D

Musical notation for the Verse section, measures 9-12. The melody consists of quarter notes: D4, E4, F#4, G4, A4, B4, C5, B4, A4, G4, F#4, E4, D4. Chords indicated above the staff are D (measures 9-10), Em (measure 11), A (measure 12), and D (measure 13).

Je - sus! lov - er of my soul;
Let me hide my self in him;
While the bil - lows o'er me roll,
While the tem - pest still is high,
more than all in him I find;

13 D Em⁷ A

Musical notation for the Verse section, measures 13-16. The melody consists of quarter notes: D4, E4, F#4, G4, A4, B4, C5, B4, A4, G4, F#4, E4, D4. Chords indicated above the staff are D (measures 13-14), Em⁷ (measure 15), and A (measure 16).

friends may fail me, foes as sail me,
tempt - ed, tried, and some - times fail - ing,
e - ven when my heart is break - ing,
storms a - bout me, night o'er - takes me,
he hath grant - ed me for - give - ness,

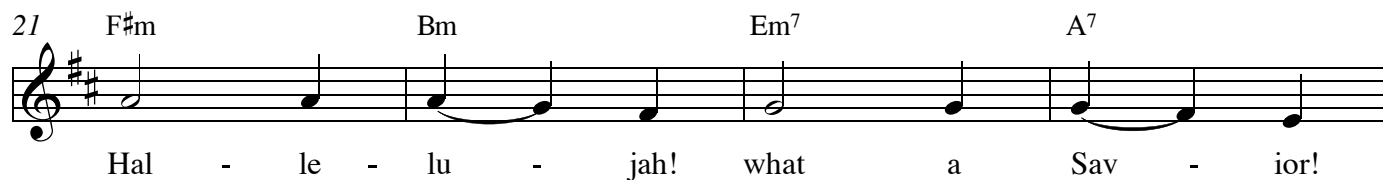
17 D Em A D

Musical notation for the Verse section, measures 17-20. The melody consists of quarter notes: D4, E4, F#4, G4, A4, B4, C5, B4, A4, G4, F#4, E4, D4. Chords indicated above the staff are D (measures 17-18), Em (measure 19), A (measure 20), and D (measure 21).

he, my Sav - ior, makes me whole.
he, my strength, my vic - t'ry wins.
he, my com - fort, helps my soul.
he, my pi - lot, hears my cry.
I am his, and he is mine.


REFRAIN

21 F#m Bm Em⁷ A⁷



Hal - le - lu - jah! what a Sav - ior!

25 D Bm⁷ Em⁷ Asus A



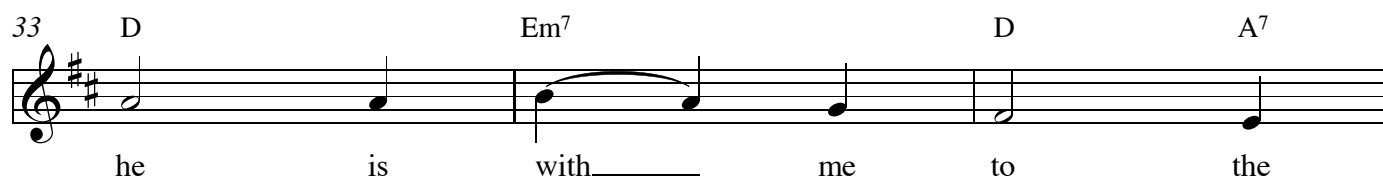
Hal - le - lu - jah! what a Friend!

29 D/F# Em D A



Sav - ing, help - ing, keep - ing, lov - ing,

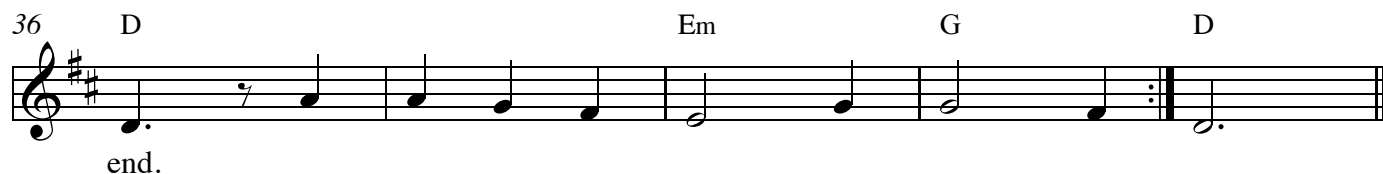
33 D Em⁷ D A⁷



he is with me to the

Back to Verse (Bar 5) [Last Time]

36 D Em G D



end.